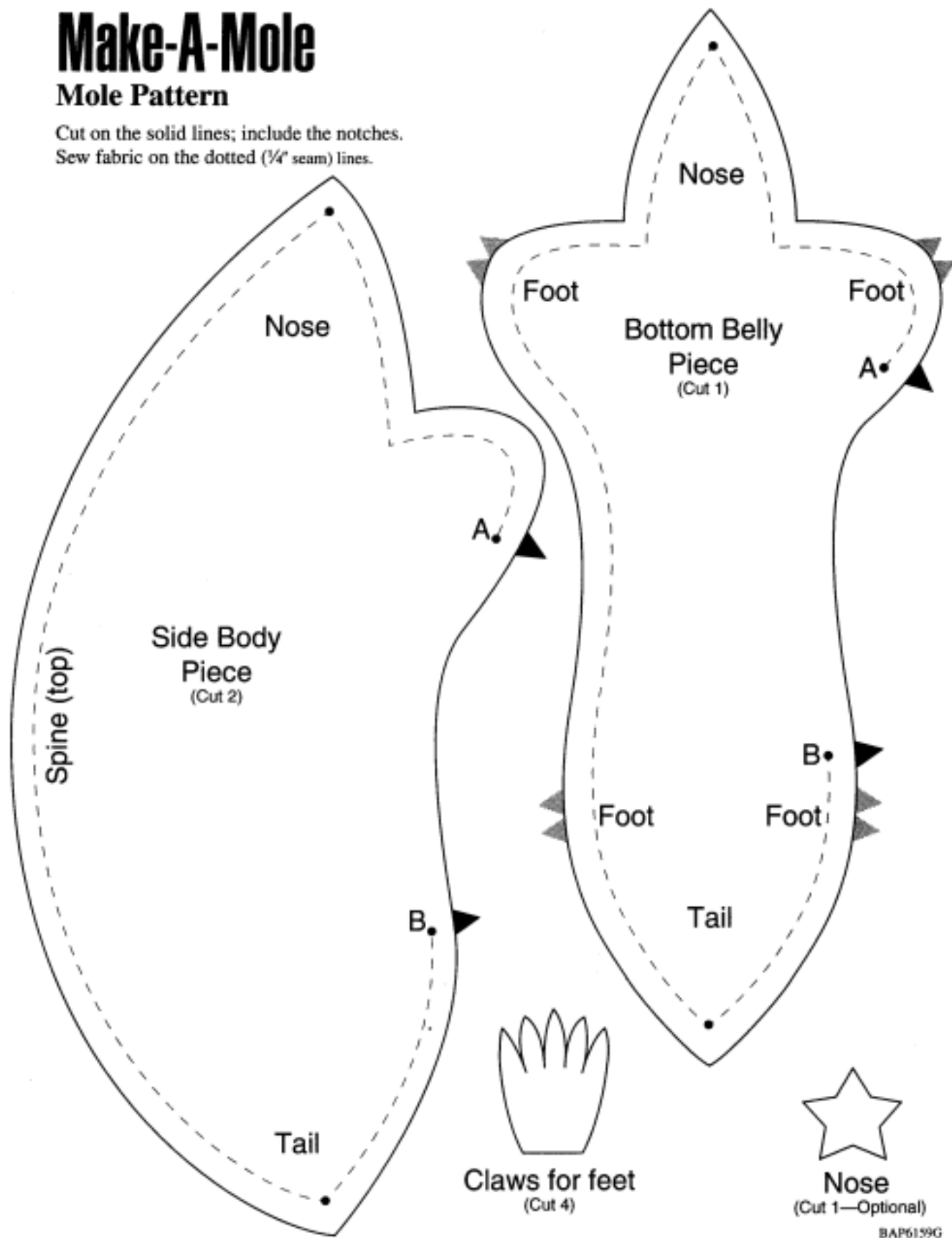


# Make-A-Mole

## Mole Pattern

Cut on the solid lines; include the notches.

Sew fabric on the dotted ( $\frac{1}{4}$ " seam) lines.





Claws for feet  
(Cut 4)



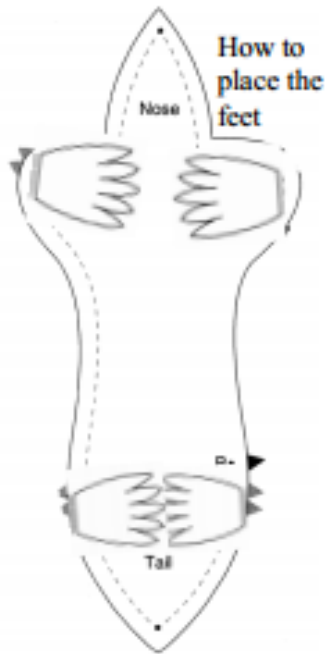
Claws for feet  
(Cut 4)



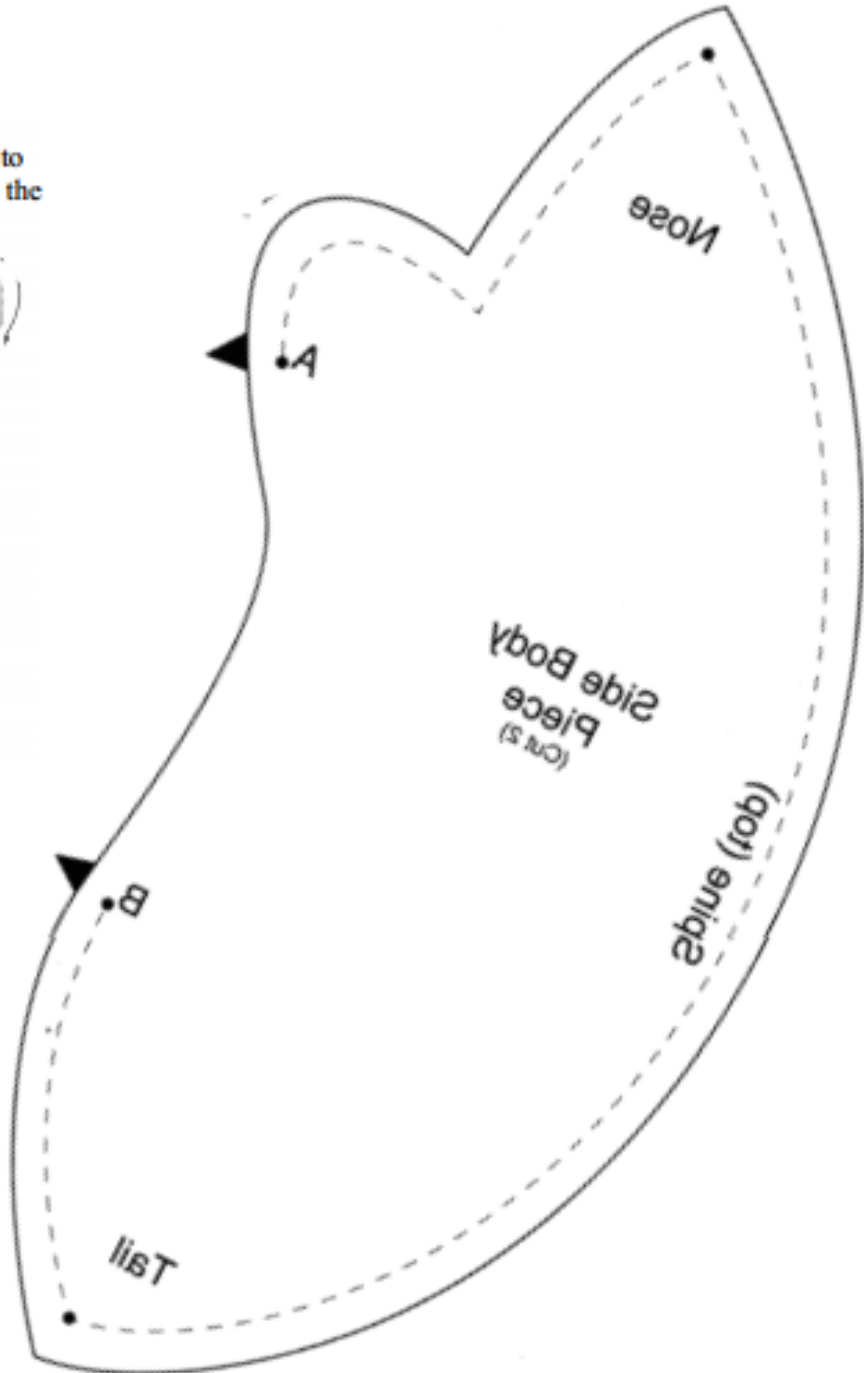
Claws for feet  
(Cut 4)



Claws for feet  
(Cut 4)



How to  
place the  
feet



Nose

Side Body  
Piece  
(Cut 2)

Side Body  
Piece  
(Cut 2)

Tail

A

B